

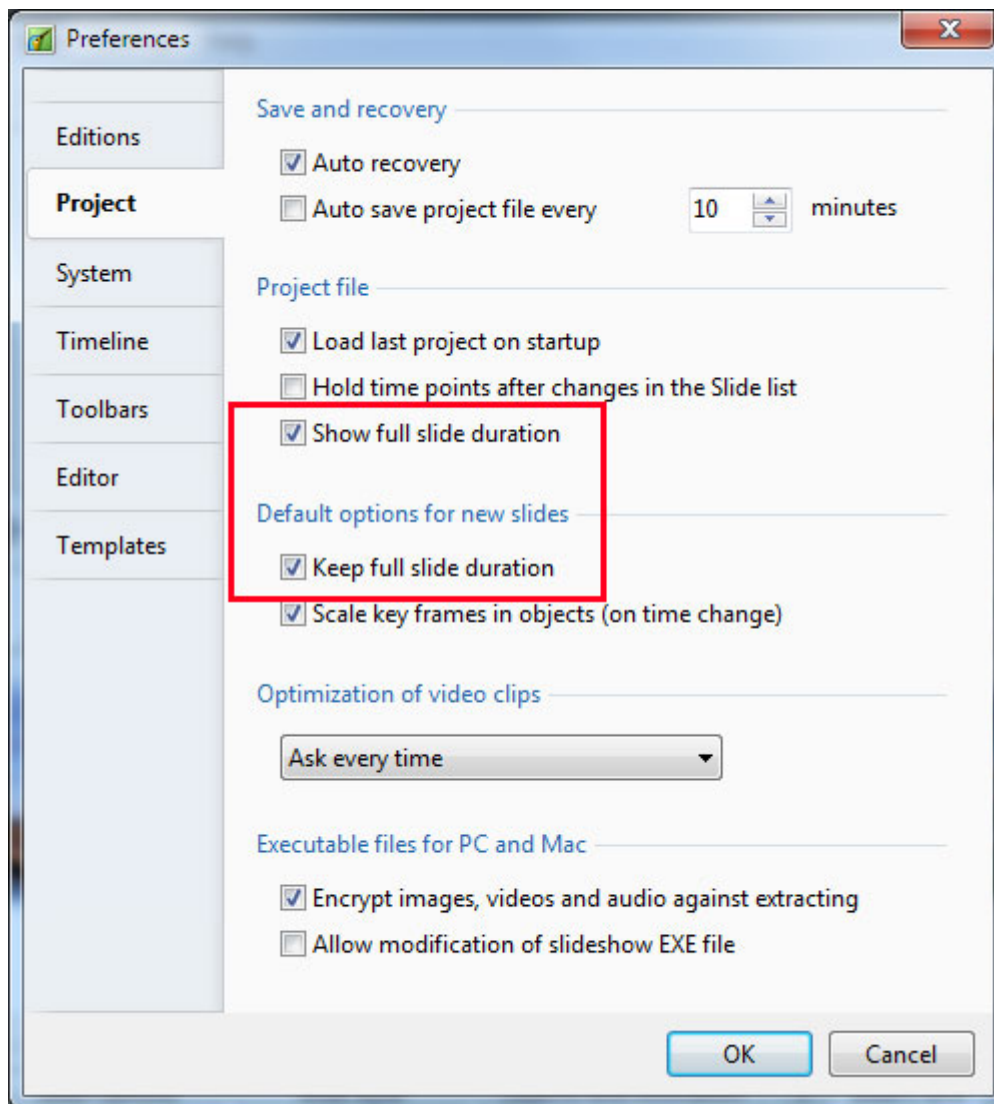
# Understand Full Slide Duration and KFSD

## Full Slide Duration

Full Slide Duration refers to the length of time a slide is visible on screen.

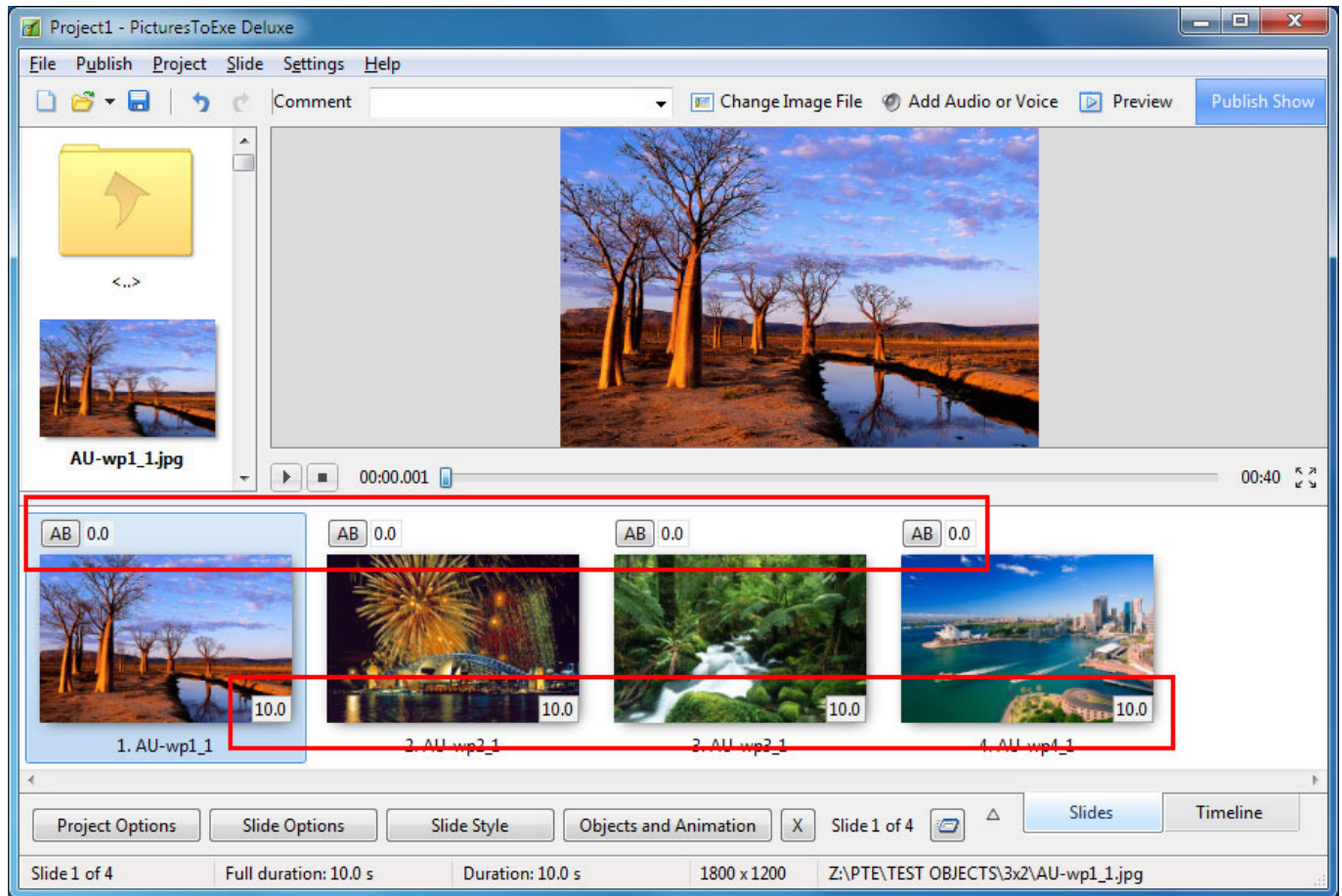
An example:

- In Settings / Preferences / Project set your project up as shown below with “Show full slide duration” and “Keep full slide duration” ticked
- In Settings / Preferences / Toolbars / Status Bar Tick Slide Duration and Full Slide Duration

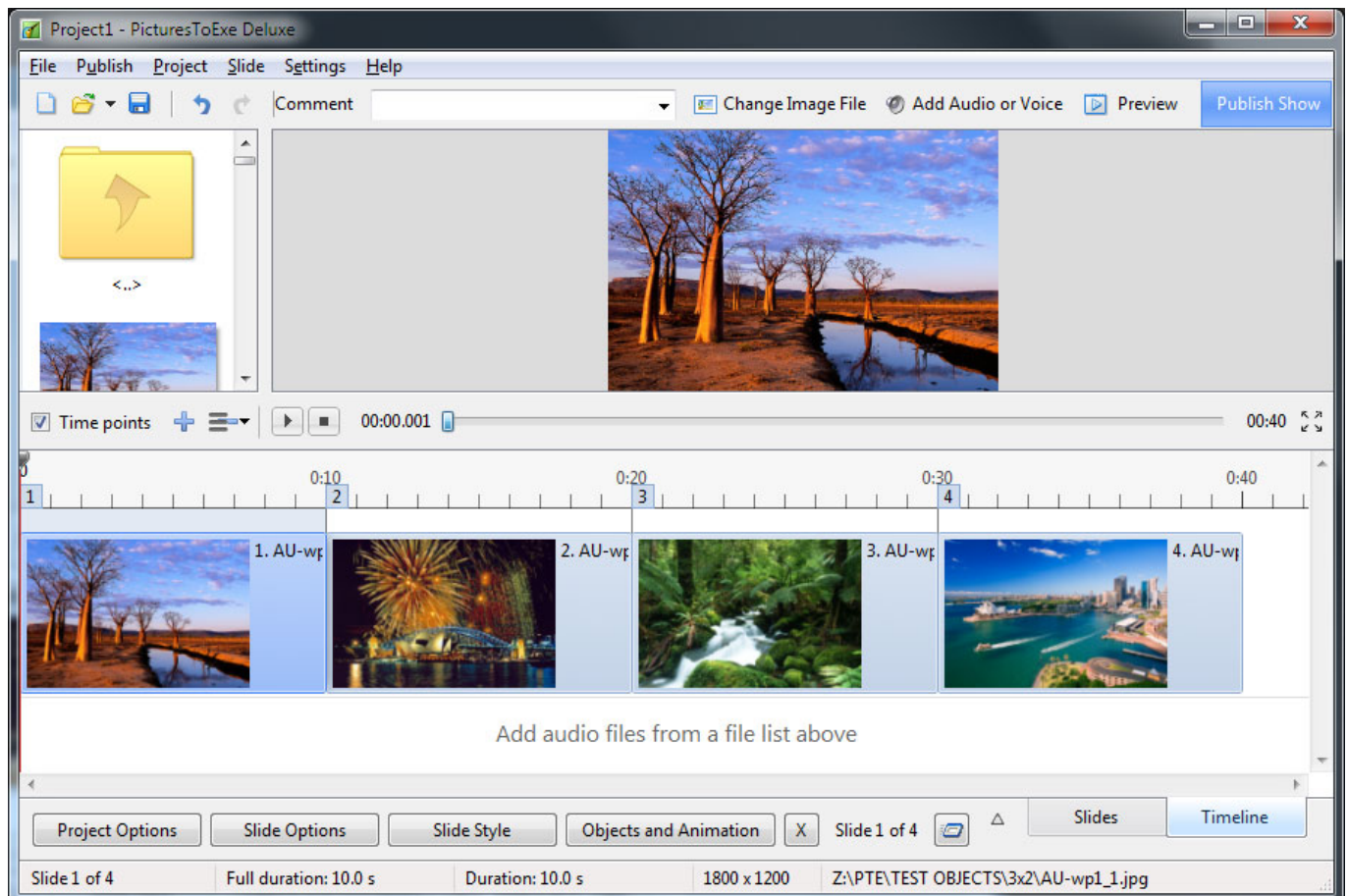


- In Project Options set a 10 second Slide Duration and a Zero second Transition Duration
- Drag four images into the Slide List

The Slide List View:



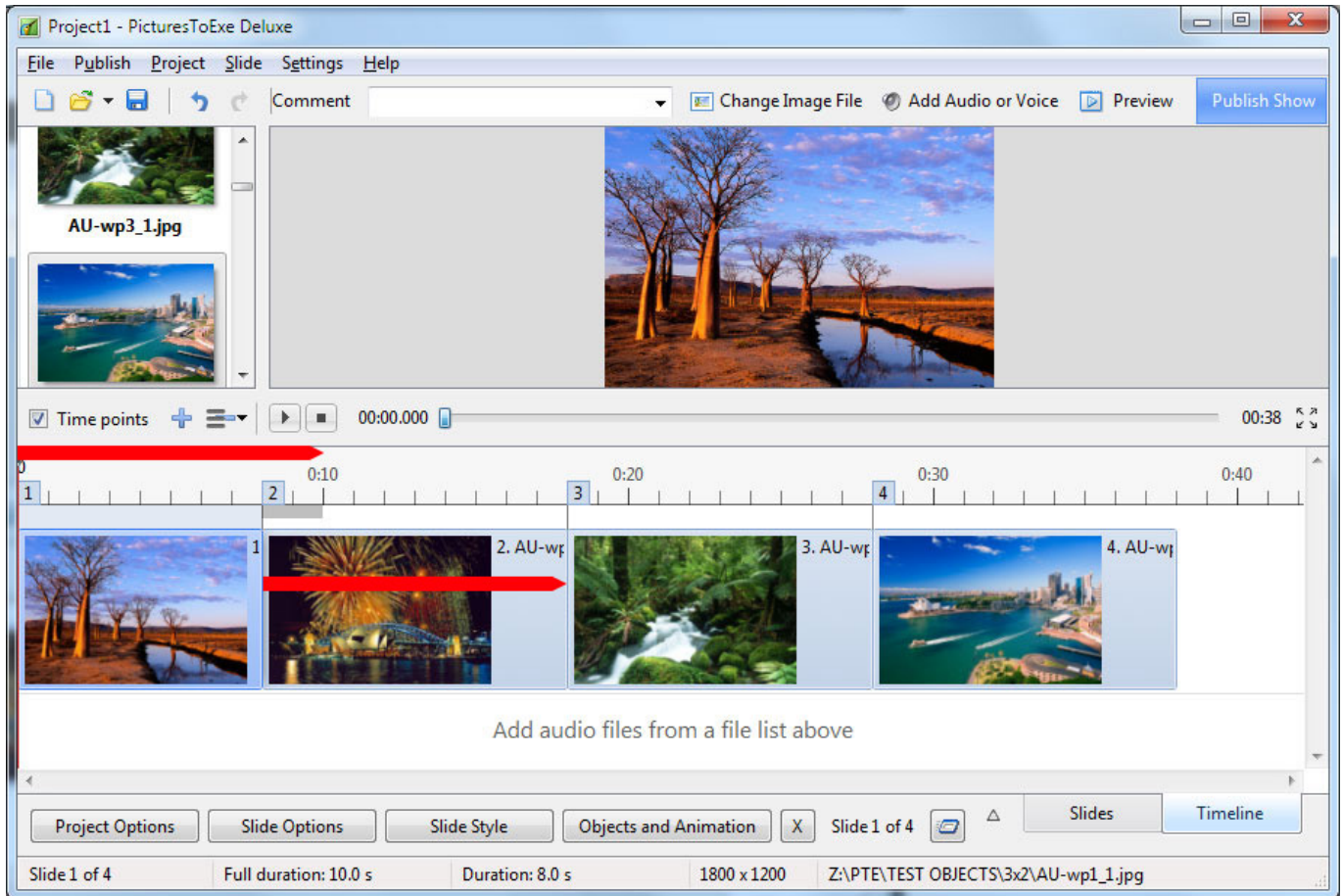
The Timeline View:



- The Information at the bottom of the screen shows that the Full Duration and the Duration are

both 10s

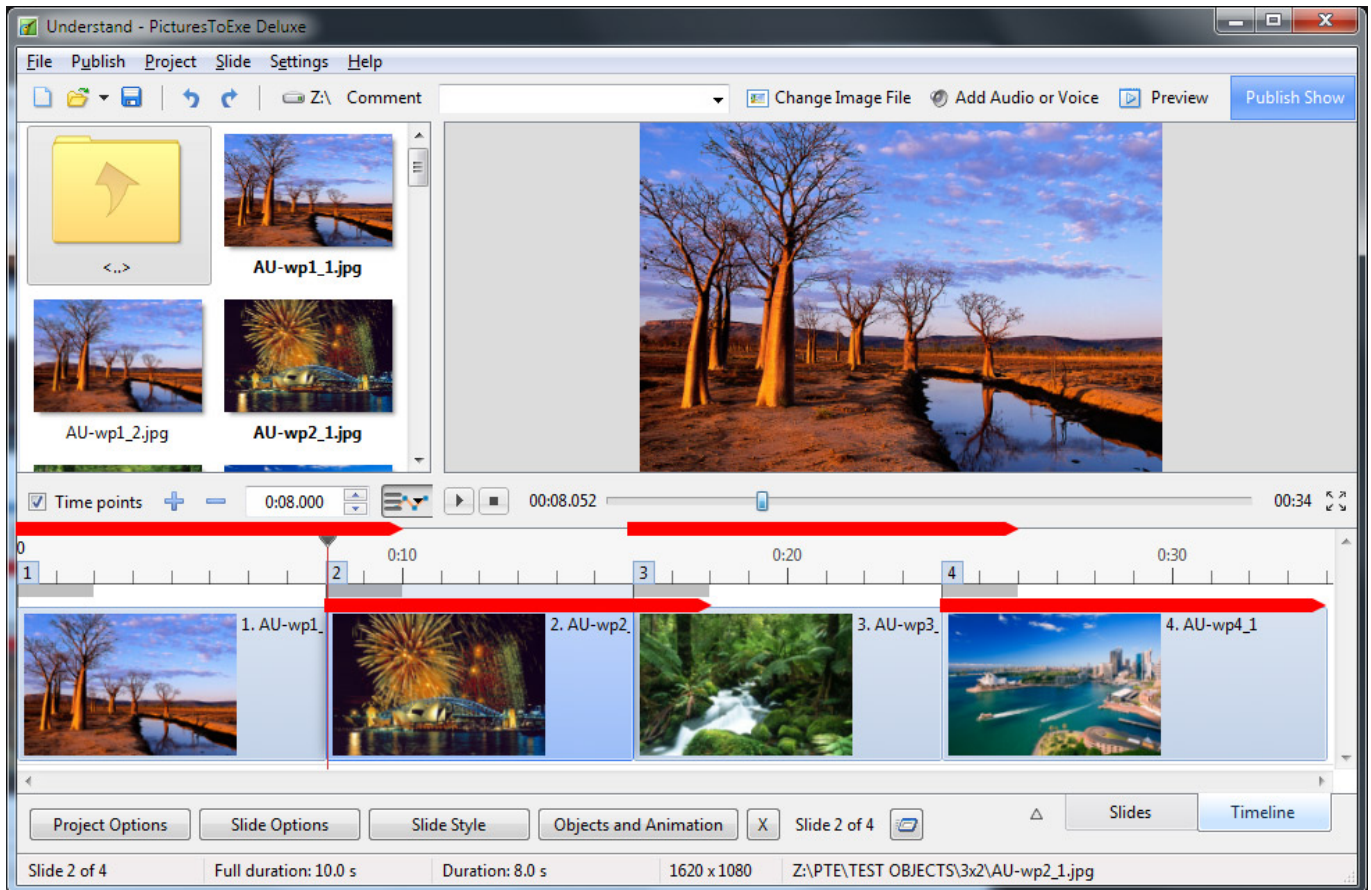
- Slide 1 = 0 to 10s
- Slide 2 = 10s to 20s
- Slide 3 = 20s to 30s
- Slide 4 = 30s to 40s
- Add a Transition Duration of 2 seconds to Slide 2 using the AB button in the Slide View



- The 10s Full Slide Duration is retained for all slides
- Slide 1 = 0 to 10s
- Slide 2 = 8s to 18s
- Slide 3 = 18s to 28s
- Slide 4 = 28s to 38s

Add a 2s transition to all slides:





## Keep Full Slide Duration

**Note: If the setting of Keep Full Slide Duration is altered in the middle of a Project - ONLY new slides added to the Slides List will have the NEW SETTING. All previous slides will retain the Previous Setting.**

There are two questions that need to be answered in order to explain Keep Full Slide Duration:

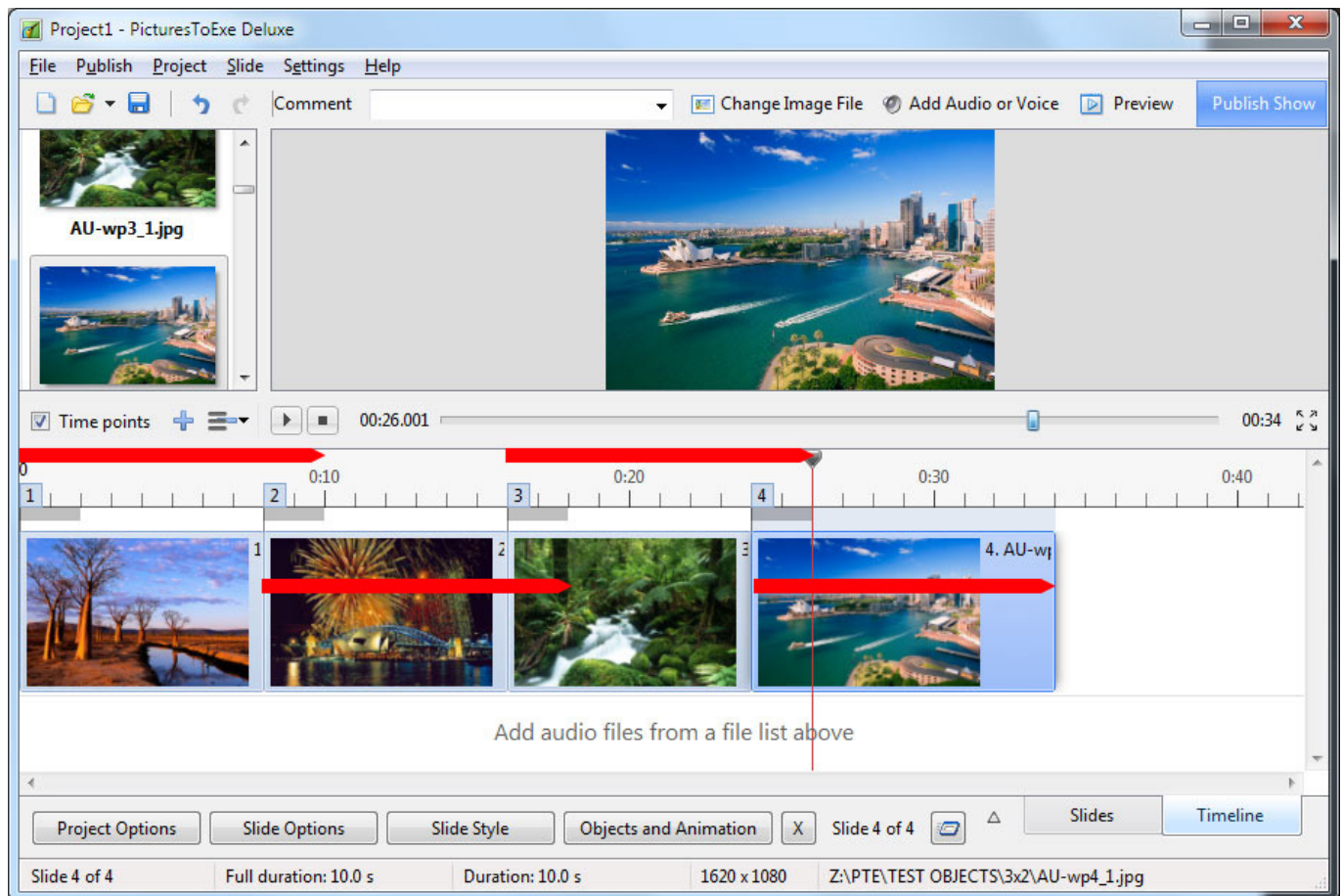
- “WHAT” is Kept?
- More importantly: “WHEN” is “it” Kept?

The first question is simple to answer: The Full Slide Duration is Kept.

The answer to the second question is a little more complicated.

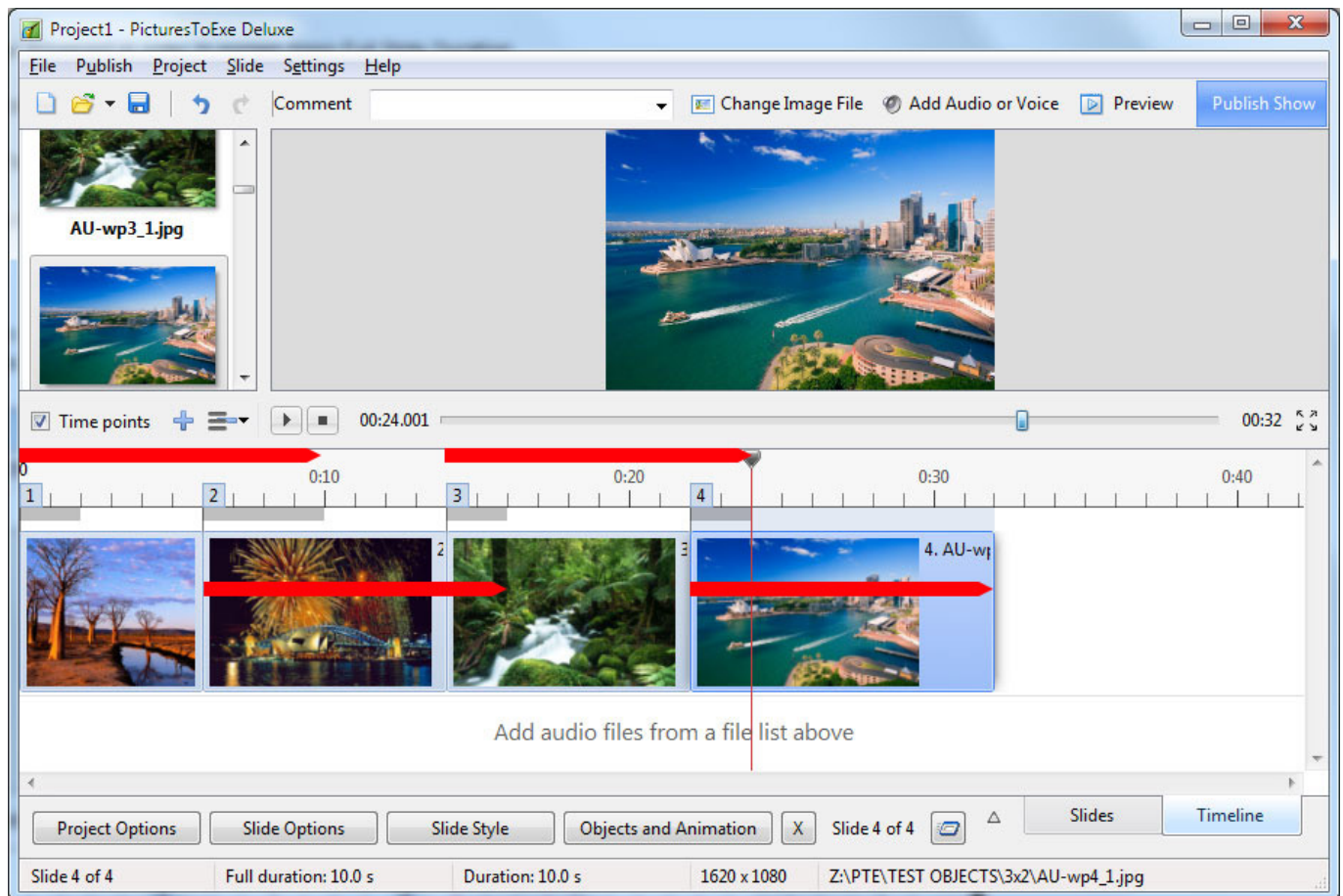
Example 1:

- Here we see a Timeline with Four slides each with a Full Slide Duration of 10 seconds and 2 seconds Transition Duration
- The Keep Full Slide Duration was ticked when the slides were added to the Slide List - so they are “KFSD Slides”
- Opening Slide Options for each individual slide will show the option “Keep full slide Duration” = Ticked



- If we now go to the Slide List and change the Transition Duration of Slide 2 to 4s by means of the AB button the Full Slide Duration of all slides is retained or “Kept”

The Timeline View:



- Slide 1 = 0 to 10s
- Slide 2 = 6s to 16s
- Slide 3 = 14s to 24s
- Slide 4 = 22s to 32s

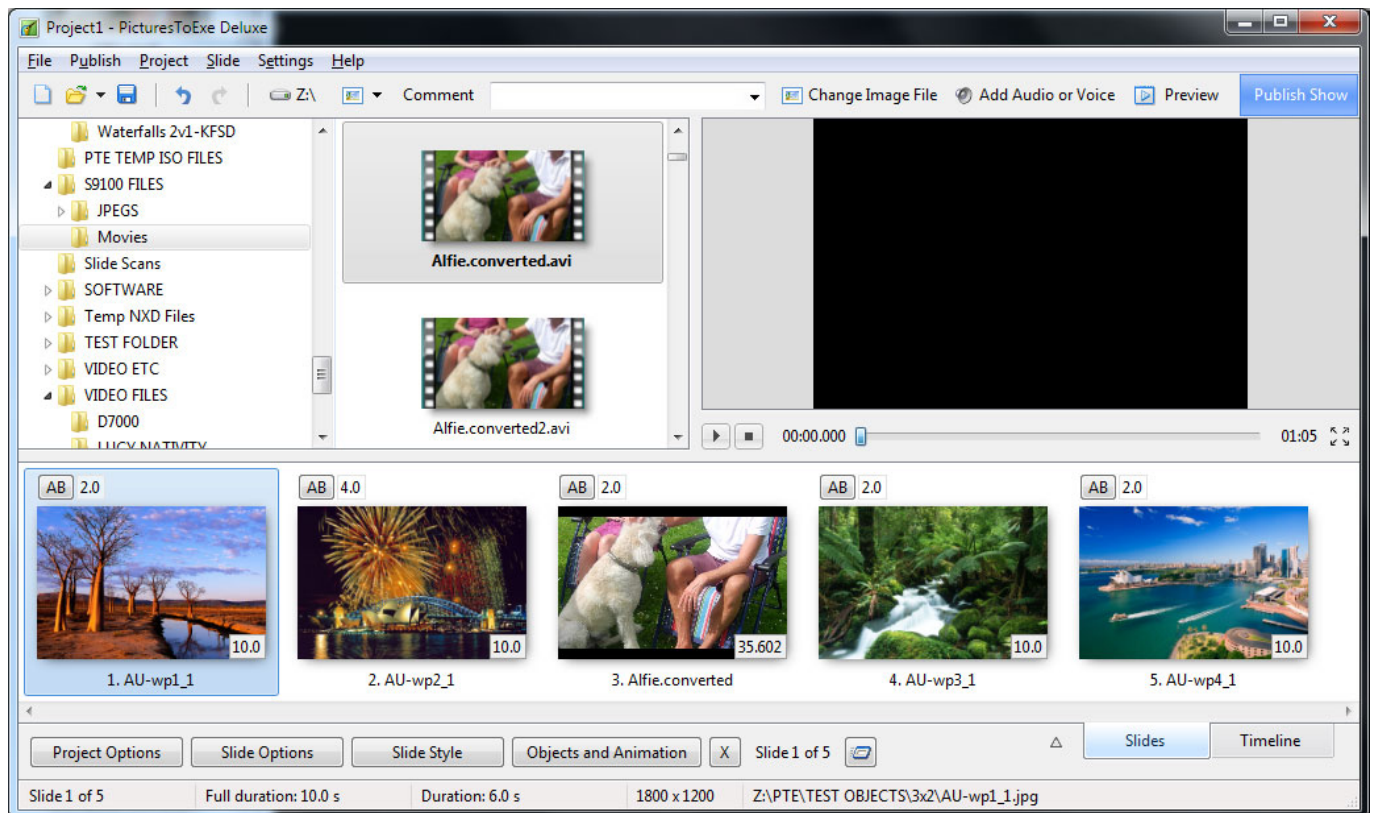
**Please Note that changing Transition and/or Slide Durations by DRAGGING in the Timeline does NOT retain or Keep Full Slide Duration**

Example 2:

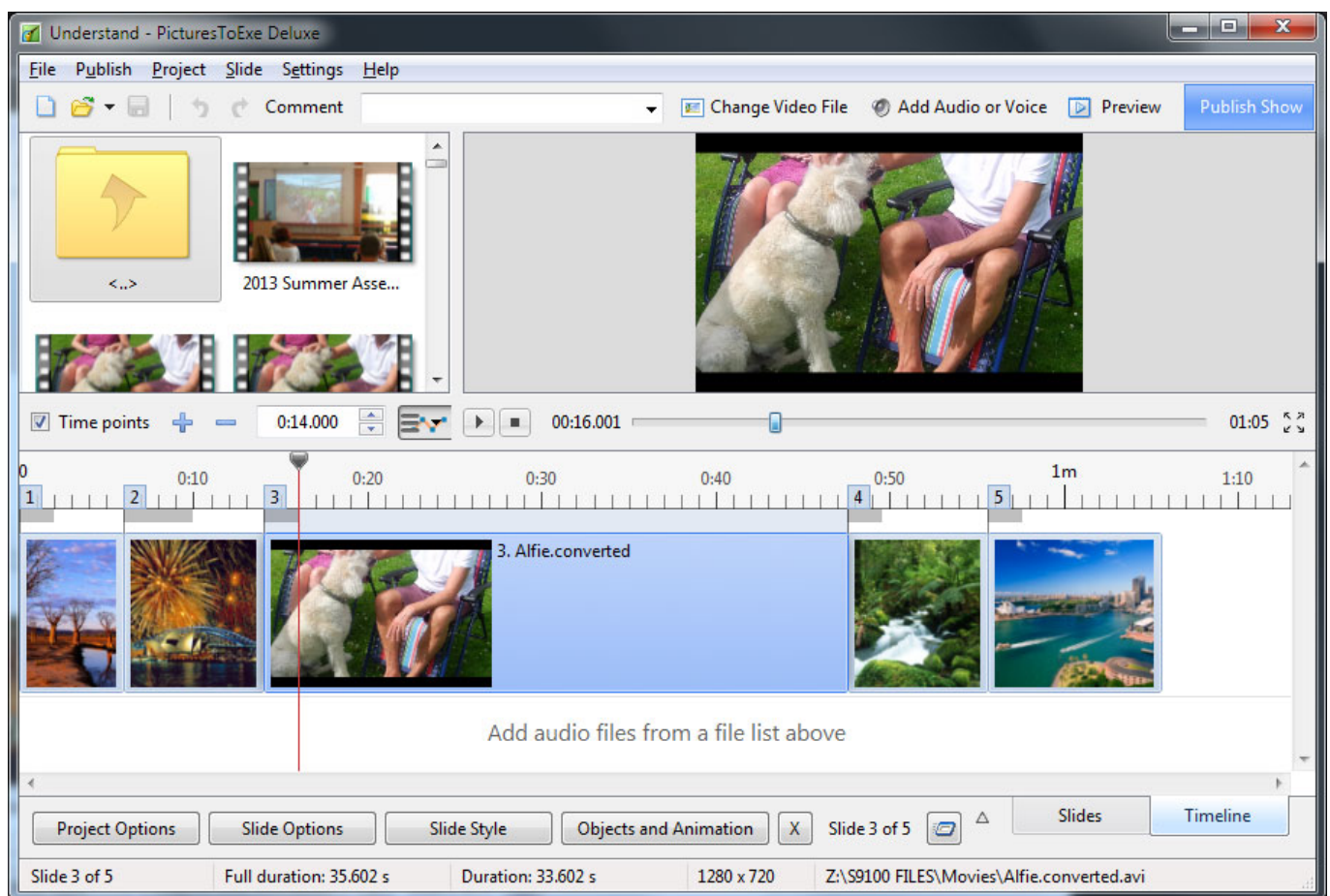
- Using the last example I have added a Video to the Slide List between Slides 2 and 3 the duration of which is 35.602 seconds
- The Video is added as a Keep Full Slide Duration slide

The Slide List View is shown below





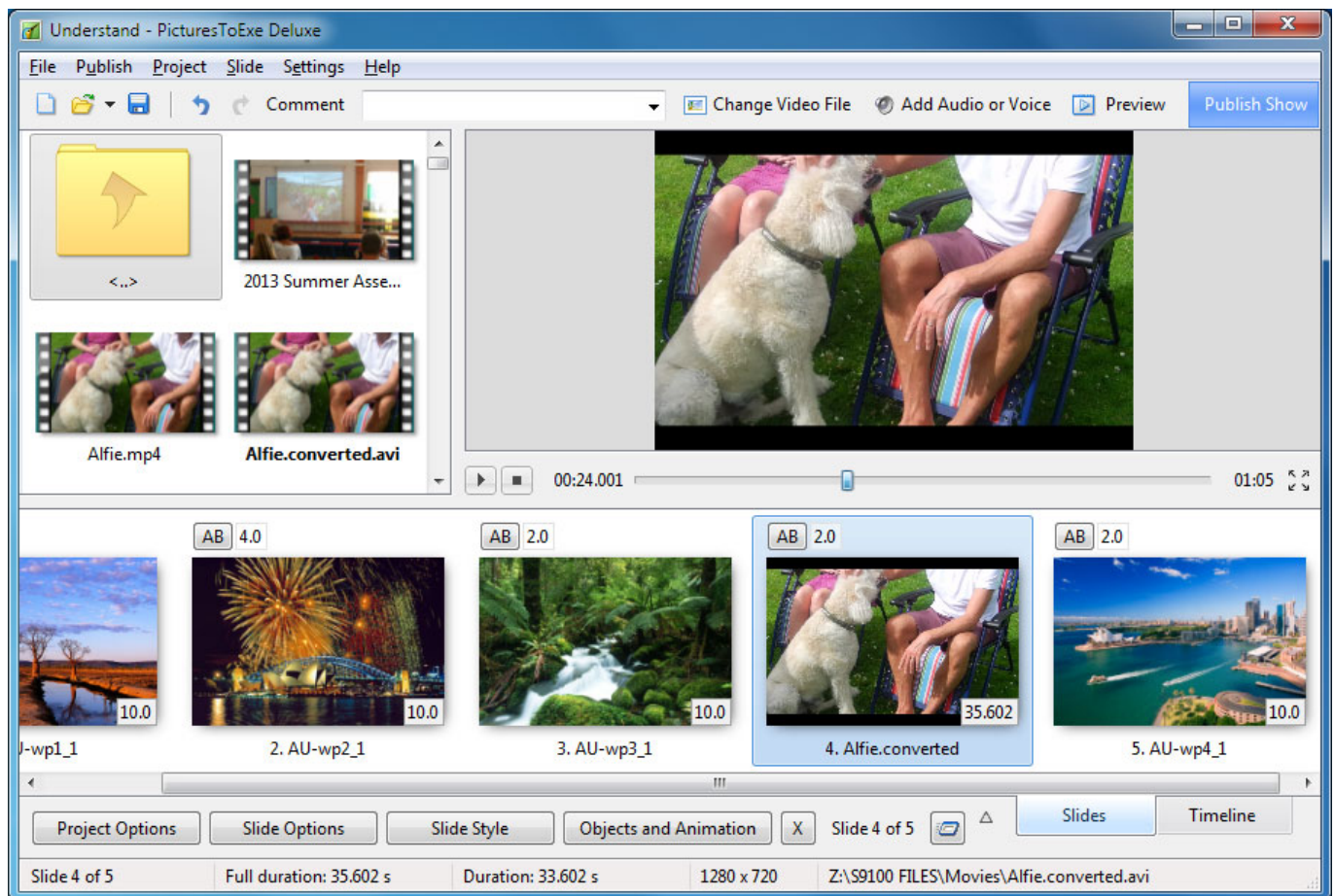
The Timeline View:



The Full Slide Duration of all Slides is retained.

In the next image the Video is moved (IN THE SLIDE LIST View) from its position between slides 2 and

3 to a position between slides 3 and 4



Once again the Full Slide Duration of all slides is KEPT or Retained.

***Please Note that changing Transition and/or Slide Durations by DRAGGING in the Timeline does NOT retain or Keep Full Slide Duration***

From:  
<https://www.docs.ptavstudio.com/> - **PTE AV Studio**

Permanent link:  
<https://www.docs.ptavstudio.com/en-us/9.0/techniques/understand>

Last update: **2022/12/18 11:20**

