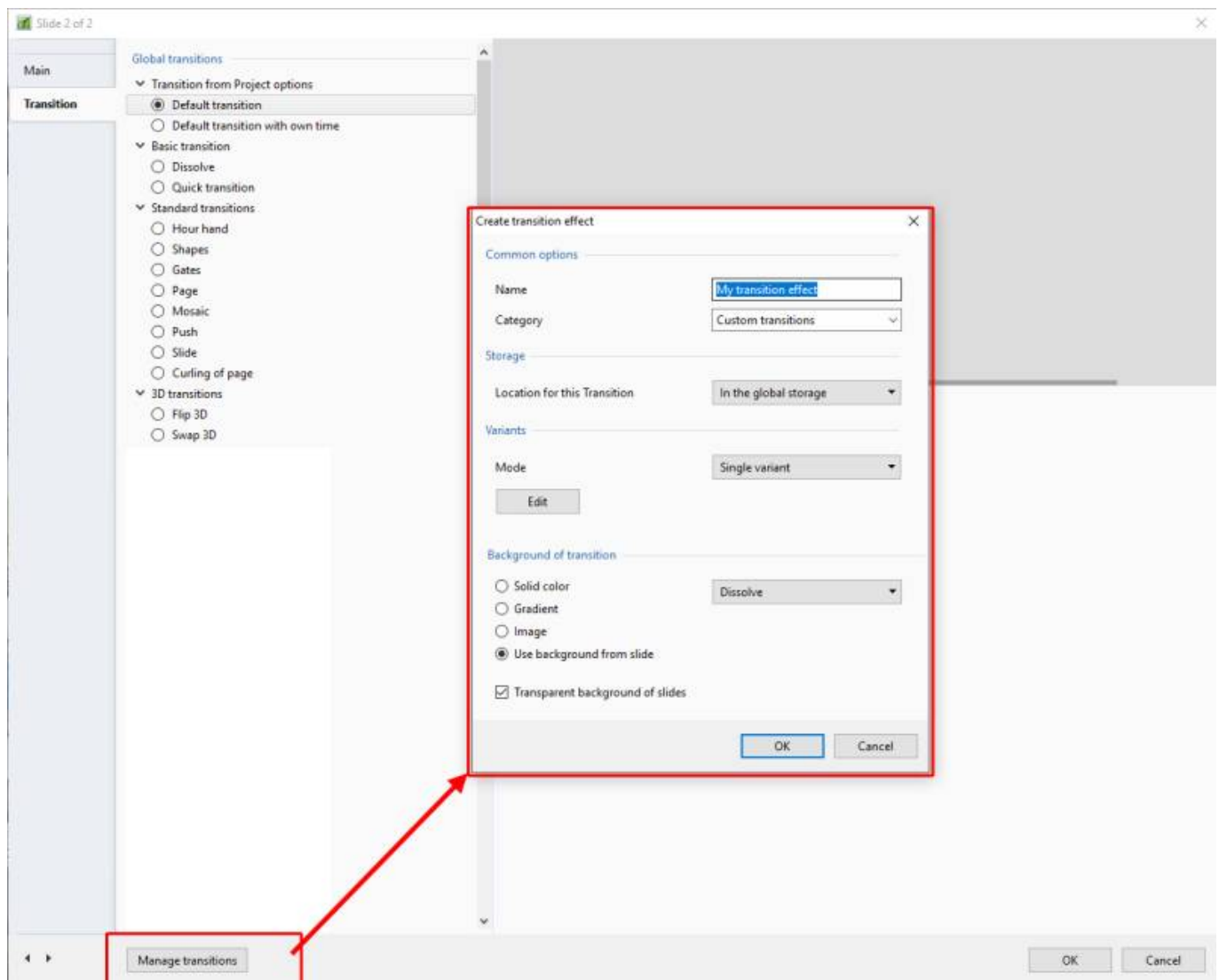


# Create Custom Transitions

- To Enter the Custom Transition Window click on the AB symbol in a slide
- Then click on the Manage Transitions button



- In Version 9 Custom Transitions can be saved either in the “Global Storage” or “Embedded” into the Current Project
- Click on Create Transition to enter the “Create Transition Effect” Editor

## Create Transition



- By choosing “Global Storage” the Custom Transition will be available for future projects
- CT's in the Global Storage can be Cloned and Moved to the Embedded Transitions area (current project)
- By choosing “This Project” the Custom Transition will be available in this project only
- Next, choose a Variant



- Choose Background Options and Click on Edit

## Single Variant



- The Aspect Ratio is automatically chosen to suit the Project Options AR

## Multi Variant - List



- Click on “+” to add a Variant to the List
- Click on “-” to Delete a Variant
- Click on Edit to proceed to the Editor
- Close the Editor Window by clicking on the “X” at top right to return to this Window
- Click on OK to Save

## Multi Variant - Buttons



- Choose a Preset Variant
- Click on an Arrow Button
- Click on Edit to proceed to the Editor
- Close the Editor Window by clicking on the “X” at top right to return to this Window
- Click on OK to Save

**After Creating a Custom Transition it would be good practice to Export it to a folder somewhere on your HD called “Exported Slide Styles”**

## Global vs Embedded Transitions

- The **Global Transitions** section contains both the Preset PTE Transitions and the Custom Transitions which you can Create yourself or Import from the Forum etc.
- The “Manage Transitions” button has a dropdown menu which allows the Option to “Clone” a Custom Transition
- The Cloned Copy can then be either edited to create a Variation or “Moved to the Local Storage” (**Embedded Transitions**)
- When creating a “Backup in ZIP” (BIZ) to export to another PC which might not have the Custom Transition it is included for use when the BIZ is unzipped
- The Global Custom Transitions are Embedded in Executable files

From:

<https://www.docs.pteamstudio.com/> - **PTE AV Studio**

Permanent link:

[https://www.docs.pteamstudio.com/en-us/9.0/how\\_to\\_v9/customtransitions?rev=1581503653](https://www.docs.pteamstudio.com/en-us/9.0/how_to_v9/customtransitions?rev=1581503653)

Last update: **2022/12/18 11:20**

